



## Morley Hill , Enfield, EN2 0BL

Nestled in the charming area of Morley Hill, Enfield, this delightful two-bedroom flat offers a perfect blend of comfort and convenience. Spanning an impressive 700 square feet, the property is designed to provide ample space for modern living.

Upon entering, you will be greeted by a welcoming atmosphere that flows throughout the flat. The well-proportioned bedrooms are ideal for relaxation, providing a peaceful retreat at the end of a busy day. The living area is bright and airy, perfect for entertaining guests or enjoying quiet evenings in.

The flat's location in Morley Hill is particularly appealing, as it offers easy access to local amenities, parks, and excellent transport links, making it an ideal choice for both families and professionals.

This property presents a wonderful opportunity for those seeking a comfortable home in a vibrant community. Looking to rent, this flat is sure to meet your needs and exceed your expectations. Don't miss the chance to make this lovely space your own Rental home.

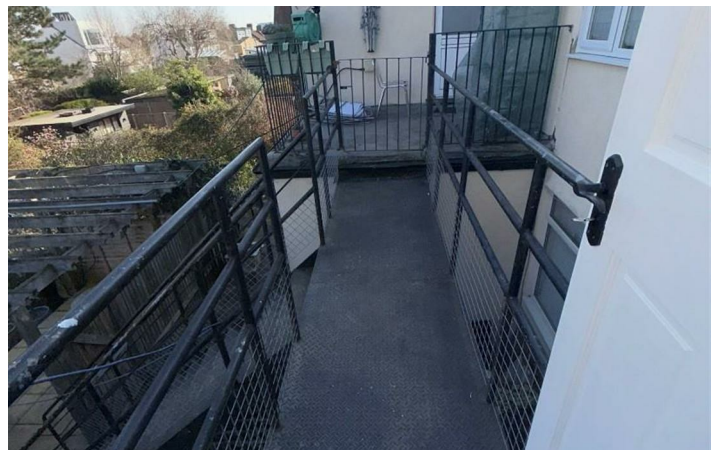
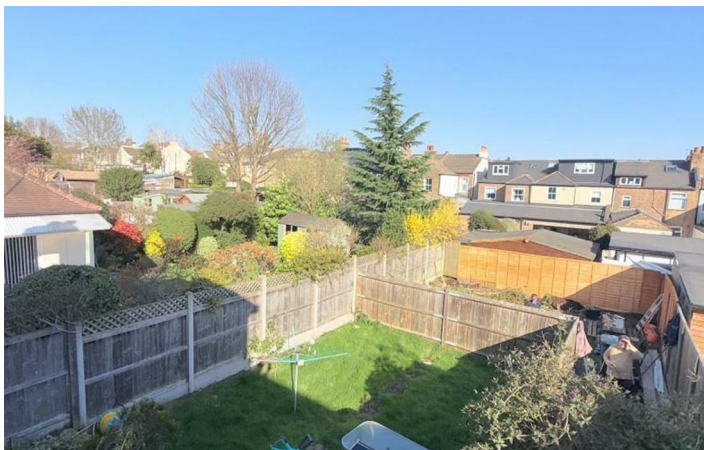
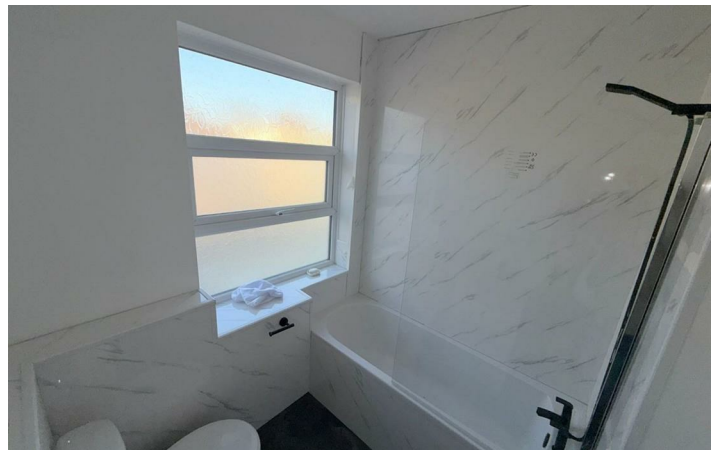
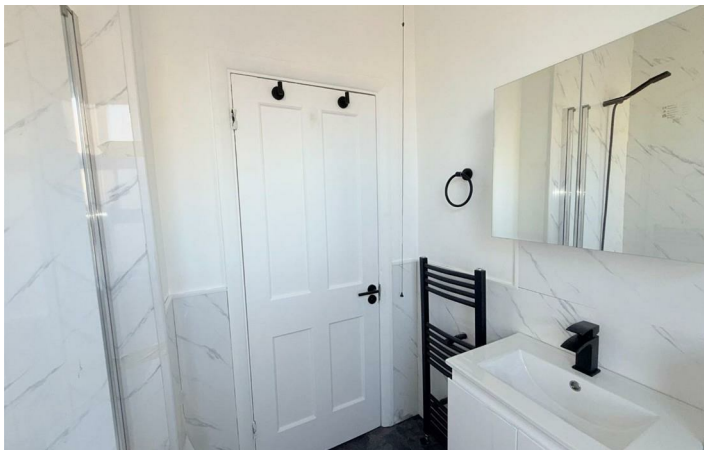
**£2,000 Per Month**

# Morley Hill

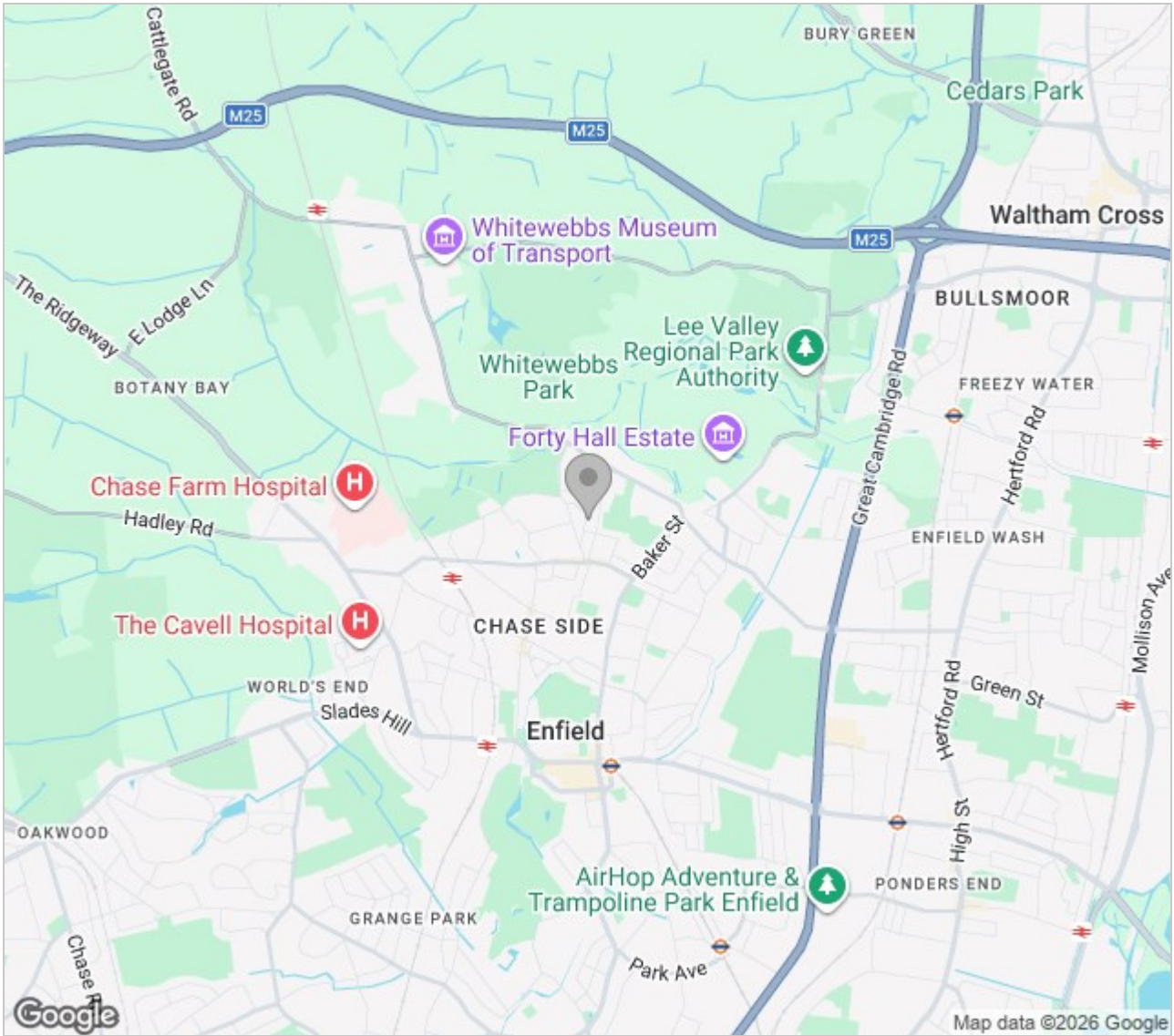
, Enfield, EN2 0BL



Directions



# Area Map



Energy Efficiency Rating		Current	Potential
Very energy efficient - lower running costs			
(92 plus) A			
(81-91) B			
(69-80) C			
(55-68) D			
(39-54) E			
(21-38) F			
(1-20) G			
Not energy efficient - higher running costs			
England & Wales		EU Directive 2002/91/EC	

Environmental Impact (CO <sub>2</sub> ) Rating		Current	Potential
Very environmentally friendly - lower CO <sub>2</sub> emissions			
(92 plus) A			
(81-91) B			
(69-80) C			
(55-68) D			
(39-54) E			
(21-38) F			
(1-20) G			
Not environmentally friendly - higher CO <sub>2</sub> emissions			
England & Wales		EU Directive 2002/91/EC	

These particulars, whilst believed to be accurate are set out as a general outline only for guidance and do not constitute any part of an offer or contract. Intending purchasers should not rely on them as statements of representation of fact, but must satisfy themselves by inspection or otherwise as to their accuracy. No person in this firm's employment has the authority to make or give any representation or warranty in respect of the property.



5 Turnpike Parade Green Lanes, London, N15 3EA  
 Tel: 0208 888 3556 Email: [info@easypropertieslondon.co.uk](mailto:info@easypropertieslondon.co.uk)  
[www.easypropertieslondon.co.uk](http://www.easypropertieslondon.co.uk)